

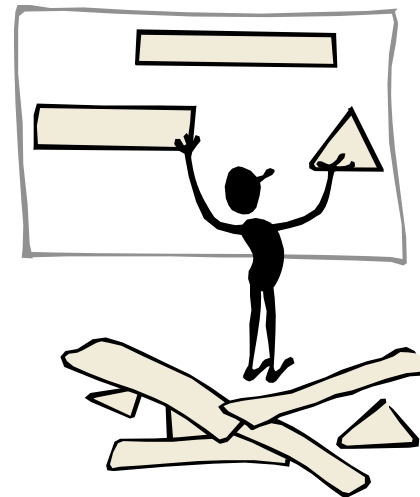
# *Western Area Power Administration Maximo 6.x Upgrade Project*



Don Nord  
MAX6 Project Manager  
nord@wapa.gov  
May 6, 2008

## Purpose of this discussion

1. Interest in project approach
2. Interest in technical approach



## Agenda:

1. Background & Overview of Maximo
2. Planning & Project Approach
3. Execution
4. Controls
5. Communication
6. Other
7. Questions

## ➤ Western Area Power Administration

*Western markets and delivers reliable, cost-based hydroelectric power and related services within a 15-state region of the central and western U.S. We're one of four power marketing administrations within the U.S. Department of Energy whose role is to market and transmit electricity from multi-use water projects. Our transmission system carries electricity from 57 power plants operated by the Bureau of Reclamation, U.S. Army Corps of Engineers and the International Boundary and Water Commission. Together, these plants have an installed capacity of 10,395 megawatts.*

## ➤ Western's Maximo Use

*Maximo is Western's enterprise application for managing assets Western-wide utilizing a single database to support approximately 800 users. Western uses Maximo for tracking assets, labor cost, purchasing, inventory, property, and fleet management, tracking resources, and maintenance activities*

### ▪ Modules

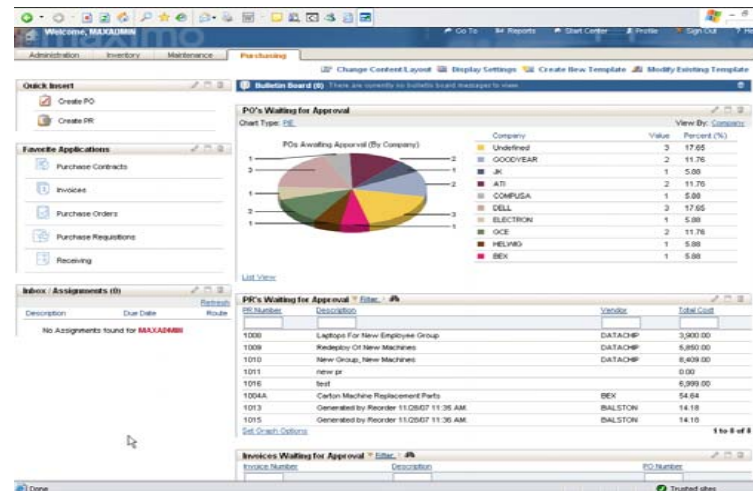
- Resources
- Asset
- Inventory
- Purchasing
- Plans
- Preventive Maintenance
- Work Order

### ▪ Interfaces

- Oracle Financial Mgmt.
- Other



- Importance of Maximo
- Upgrade Drivers
- Upgrade objective - Maximo 4.1.1 to 6.2



## Agenda:

1. Background & Overview of Maximo
- 2. Planning & Project Approach**
3. Execution
4. Controls
5. Communication
6. Other
7. Questions

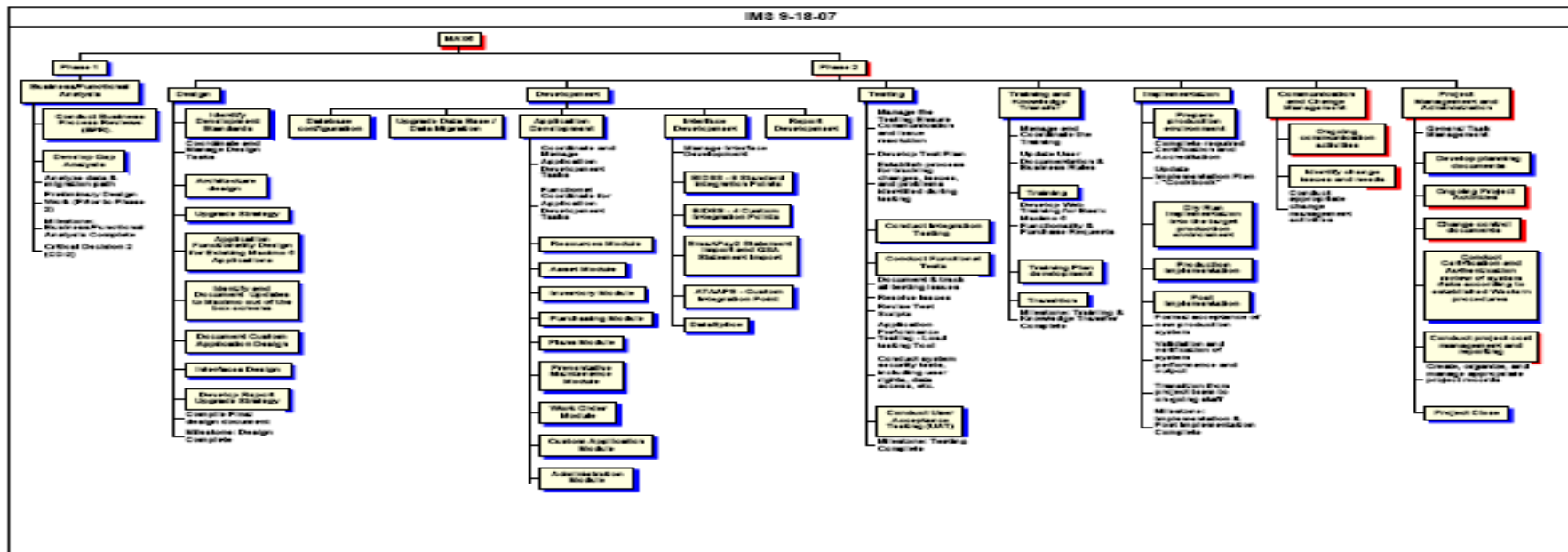
## People and Organization

- Project Manager
- Maximo Coordinator & user community
- Project Team
  - Core Team
  - Expanded Team
- Sponsors
  - Functional Sponsors
  - Executive Sponsors
- Consultants - TRM



## Project Plan

- Project Plan (Word document)
  - Scope, Cost, Stakeholders, Team, Approach, etc.
- Supplemental plans
- Integrated Master Schedule (MS Project)
- Work Breakdown Structure (WBS)



## Project Elements - Scope

- Business/Functional Analysis
- Design
- Development
- Testing
- Training
- Implementation
- Communication and Change Management
- Project Management & Administration

## Schedule

- Project Start September 2007
- Integrated Master Schedule (MS Project)

ID	Task Name	Work	Duration	Start	Finish	2007				2008				2009			
						Q1	Q2	Q3	Q4	Q1	Q2	Q3	Q4	Q1	Q2		
1	<b>MAX6</b>	33,810.6 hrs	465 days?	Sep 4 '07	Jun 19 '09												
2	Phase 1	0 hrs	100 days	Oct 22 '07	Mar 12 '08												
3	Business/Functional Analysis	0 hrs	100 days	Oct 22 '07	Mar 12 '08												
17	Phase 2	33,810.6 hrs	465 days?	Sep 4 '07	Jun 19 '09												
18	Design	5,128 hrs	92 days	Mar 3 '08	Jul 8 '08												
96	Development	11,186.93 hrs	156 days?	Apr 14 '08	Nov 17 '08												
329	Testing	4,282.67 hrs	205 days	Jun 4 '08	Mar 17 '09												
357	Training and Knowledge Transfer	3,870 hrs	153 days	Oct 9 '08	May 11 '09												
374	Implementation	2,097 hrs	288.75 days	Apr 15 '08	May 22 '09												
398	Communication and Change Management	1,380 hrs	340 days	Mar 3 '08	Jun 19 '09												
405	Project Management and Administration	5,866 hrs	465 days	Sep 4 '07	Jun 19 '09												

## Resources

- In-house staff
- Support services
- Consultants
- Hardware
- Training
- Travel
- Licenses and services



## Agenda:

1. Background & Overview of Maximo
2. Planning & Project Approach
- 3. Execution**
4. Controls
5. Communication
6. Other
7. Questions

## Analysis

### ➤ Functional

- Existing documentation
- Business Process Review workshops
  - Inventory/Property/Fleet
  - Safety/Security
  - Environment
  - Maintenance
  - Purchasing
- Gap Analysis - Requirements
- Functional Requirements & Design Specs

## Analysis

### ➤ Technical

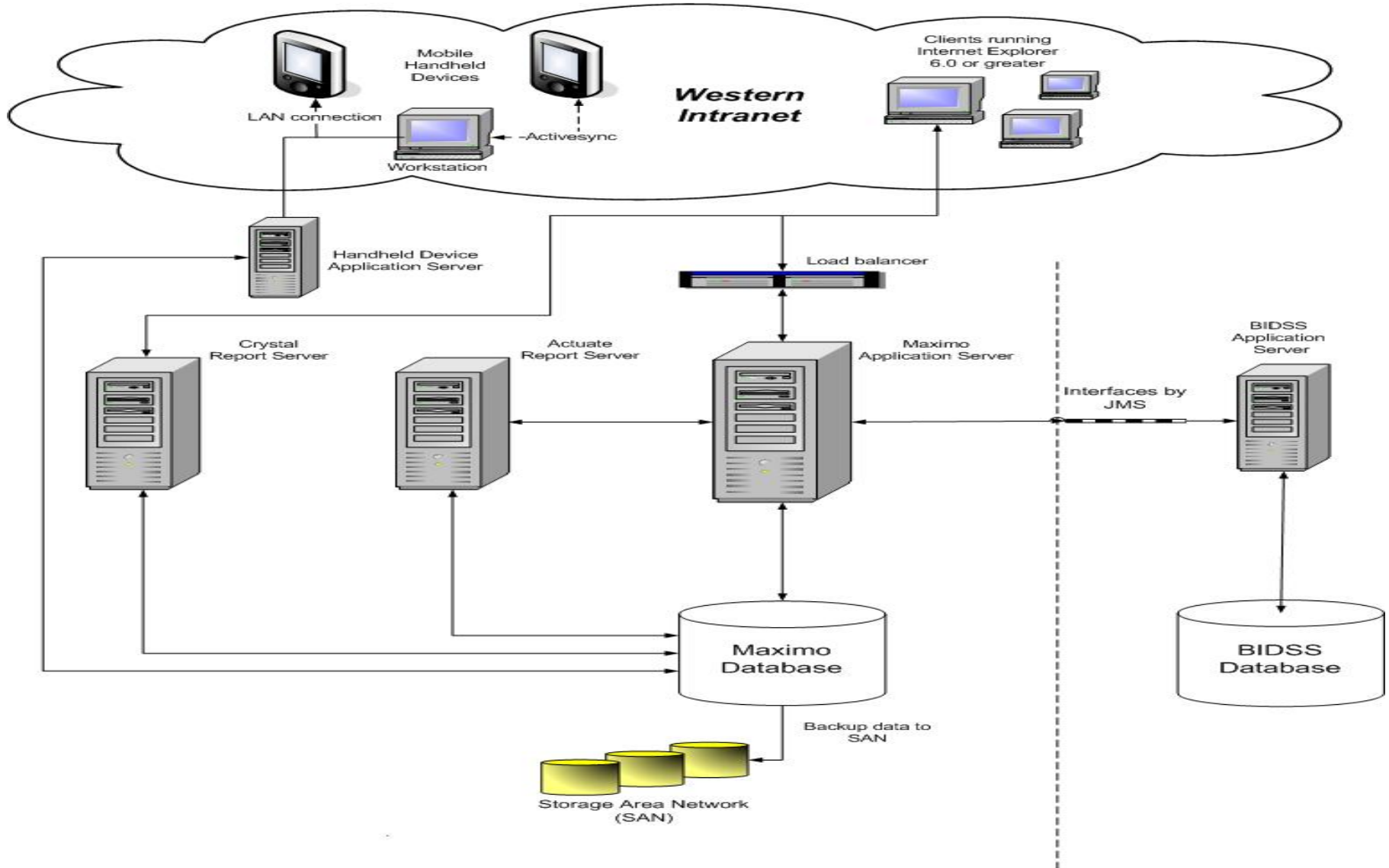
- Technical upgrade analysis
- Decision to use Data Migration approach

## Design

- Maximo system architecture and environment
- Hardware
- Current application design work



## MAXIMO 6 Architecture



## Agenda:

1. Background & Overview of Maximo
2. Planning & Project Approach
3. Execution
- 4. Controls**
5. Communication
6. Other
7. Questions

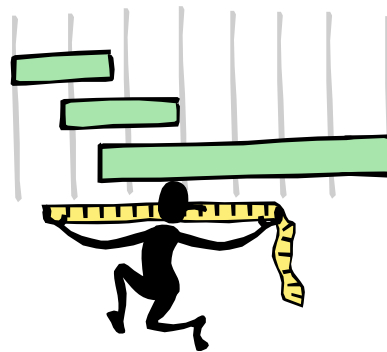
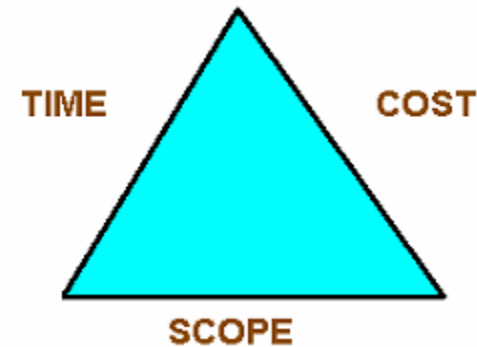
## ➤ Critical Decisions (CD)

- CD-1 Approve the Project Plan
- CD-2A Approve business requirements and baseline
- CD-2B: Confirm technical design
- CD-3: Authorization to “go live.”
- CD-4: Acceptance and project close



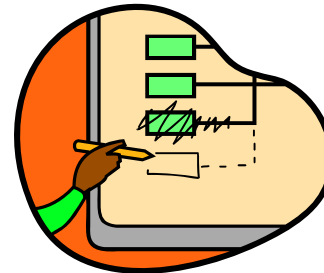
## Project Performance

- Baseline
  - Cost
  - Schedule
  - Scope
- Tracking costs - Earned Value Mgmt (EVMS)



## Other Controls

- Configuration Management
- Project change control
- Risk management




## Agenda:

1. Background & Overview of Maximo
2. Planning & Project Approach
3. Execution
4. Controls
- 5. Communication**
6. Other
7. Questions

## Change management

## Communication

- Sharepoint
- Status reports
- Email groups
- Meetings & Presentations

 Western Maximo 6.x Upgrade Project

The Maximo 6.x Upgrade Project (MAX6) will upgrade Western's Maximo system from version 4.1.1.1 to version 6.2, during the period of September 2007 to April 2009. This Sharepoint site is used by the Project Team for communication and document sharing, and it also provides project status and information to all of Western. For more information, contact Project Manager Don Nord, 720-962-7072 nord@wapa.gov, or other Project Core Team members (see "Project Core Team" List).

Announcements		Project Documents	
Type	Name	Type	Modified By
Document	MAX6 Work Order Listing @ by Don Nord	Folder	IMS - Schedule (draft) Don Nord
Document	Agenda & Notes - April 3 Team Call @ by Don Nord	Folder	Supplemental Mgmt. Plans Don Nord
Document	March Status Report @ by Don Nord	Folder	EPR Sean Clark-McCarthy Don Nord
Document	Agenda & Notes - March 20 Team Call @ by Don Nord	Folder	Regional Business Rule docs Don Nord
Document	Updated Integrated Master Schedule (IMS) @ by Don Nord	Folder	Team Meeting-Call Notes Don Nord
	Attached is the IMS in MS Project, proposed as the schedule baseline for Phase 2, the remainder of MAX6 project. It's also attached in PDF format and as a graphical representation as the WBS. The schedule baseline, as well as the cost baseline, will...	Document	status reports work orders MAX6 2008-04-04 Don Nord
		Document	MAX6 Project Plan 10-4-07 Don Nord

## Wrap-up

- Review
- Questions?

